





MISSION

SpiriTrust Lutheran®, witnessing to the Gospel of Jesus Christ, provides exceptional health, human and senior living services by supporting persons in achieving an optimal quality of life.

VISION STATEMENT

SpiriTrust Lutheran is recognized as a leader in service excellence as we compassionately care for the children of God.

CORE VALUES

HERITAGE

We honor our Lutheran heritage to reach out in love to those in need, recognizing no one is outside God's mercy.

SERVICE

We commit ourselves to the total well-being of those who place their trust in us.

INTEGRITY

We hold as a sacred trust each life we touch. We honor our promise and act ethically in all we do. We dedicate ourselves to excellence in all we do.

DIGNITY

We respect and honor the uniqueness of all God's children.

STEWARDSHIP

We celebrate that all gifts are entrusted by God. We dedicate ourselves to being good stewards of these gifts.

MESSAGE FROM THE PRESIDENT / CEO

2016 was an “anniversary” year for our agency. We marked 65 years of providing exceptional services across multiple service lines to those in need.

65 is the age that many people choose to retire from full time work. Retirement communities are an integral part of the services SpiriTrust Lutheran provides. But “retiring” isn’t anywhere in our plan! As an agency bringing healing, hope and wholeness to, at last count, more than 25,000 individuals, we are going full steam ahead, working more than full time to bring vitally needed services to 23 counties across Pennsylvania and Maryland.

In the recent past we added assisted living and memory support care at our Sprenkle Drive campus in York. We’ve begun the planning for skilled care and memory support care at our Chambersburg campus. We’ve partnered with “Friends Life Care”, another faith-based agency in Pennsylvania, to provide a new level of in-home care, what’s often referred to as a “continuing care retirement community without walls”. And, our board has approved a new vision that includes some bold moves into new affordable housing models throughout our communities.

At 65 or so, individuals have earned the right to slow down a bit. But at SpiriTrust Lutheran, our planning for the future never slows down. The needs of those we have been called to serve throughout these decades haven’t slowed down – in fact, just the opposite. So, we continue to heed the call to serve, bringing our experience and skills from the past to bear on the needs of the present and the future.

We could not heed that call without YOU. Your support, your partnership, is reflected not just in the listing of donor’s names, but even more, in the stories of the impact your support is making. They are in fact YOUR stories.

Thank you for allowing us to serve in your name. Thank you for enabling our spirit of service and our legacy of trust. Thank you for all you have done in this 65th year of our life together. 🌈



Robert L. Rundle
President & CEO, SpiriTrust Lutheran



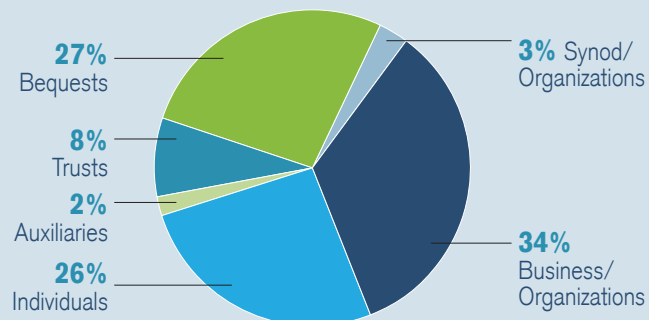
Robert L. Rundle

65 years of providing exceptional services to those in need...

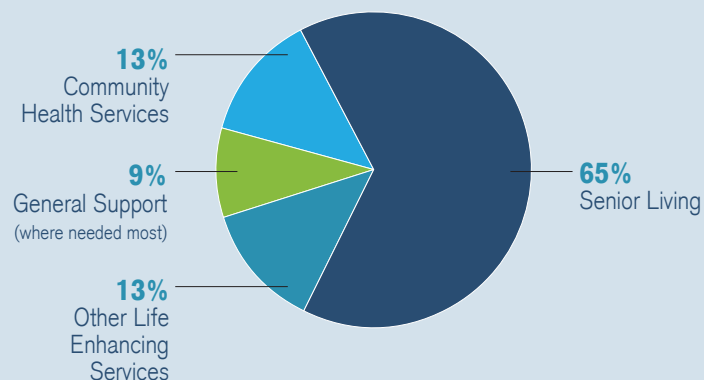
PHILANTHROPIC GIVING | COMMUNITY IMPACT

In 2016, donors such as you, contributed more than \$3.3 million to support the work of SpiriTrust Lutheran®. Volunteers also donated more than 109,000 hours of services. Thank you for the difference you make!

SOURCES OF SUPPORT IN 2016

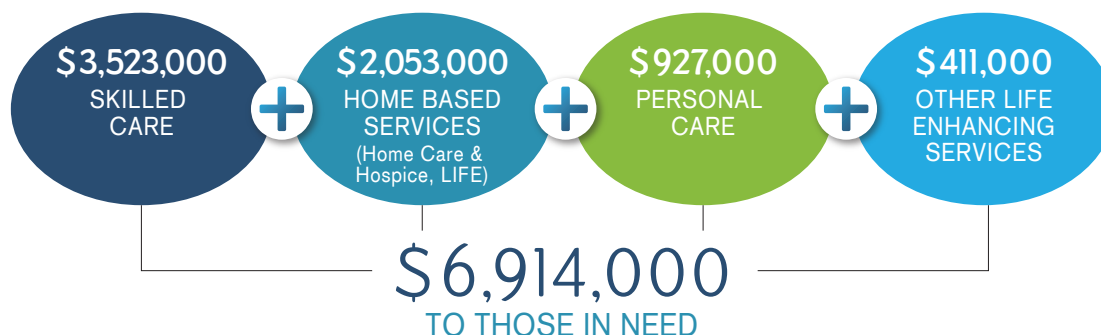


WHAT YOUR GIFTS SUPPORTED IN 2016



HOW YOUR DOLLARS ARE BEING SPENT

In addition to philanthropic dollars contributed by you, SpiriTrust Lutheran provided more than \$6.9 million in benevolent care to those in need in our community in 2016.



FAST FACTS

YOUR support, YOUR time and YOUR efforts have made a huge impact on the SpiriTrust Lutheran community.



SpiriTrust Lutheran **welcomed 1,046 new residents** to our six senior living communities this year.



SpiriTrust Lutheran **served 24,095 clients** and residents this year. Our client population increased by 13%!



SpiriTrust Lutheran Home Care and Hospice employees **drove a total of 52,163 miles** to care for our clients. This is the equivalent of two trips around the world!



Home Care & Hospice census **rose 9%** last year, which totaled **199,109 client visits**. This allowed those we serve to recuperate in the comfort of their own home after a lengthy illness or surgery.



Volunteers donated more than **3,600 hours** to the Volunteer Income Tax Assistance (VITA) program to serve **5,806 individuals** through the preparation of **3,957 tax returns**.



Life Enhancing Services served more than 9,200 clients this year. Thanks to our Cornerstone Dinner sponsors who help to make this possible.

MESSAGE FROM THE FOUNDATION

Friends,

If you're paying attention, you will notice a subtle but important change in this year's report. It's small, but hard to miss. It's right on the cover in fact. The change is about what we actually call this report. In the past, it has always simply been our "annual report". But this year, we are calling it our annual "donor and community impact" report.

As the saying goes, what's in a name, or in this case, a name change? The answer is "a lot." As Mark Twain once said, the difference between almost the right words and the right words is like the difference between a lightning bug and lightening! Reporting to you and the community at large on the annual contributions of our donors has always been and still is very important. But what are those donations really about? Is it just about the dollars and cents (important, though, as dollars and cents may be)? Or is it about something more?

It most certainly is. And the "something more" is, in a word, IMPACT. The financial contribution of our friends isn't about figures on a balance sheet. It's about the human figures we encounter at SpiriTrust Lutheran every day – 25,000 of them at last count – and how the balance of these people's lives often hinge on the services we are providing.

If you're a donor reading this, you will find your name – as you should – listed in the final section of this report. For the financial gifts you have given us, we are profoundly thankful, and are gratified to be able to acknowledge those gifts in this way. But the truth is that you will also find yourself in the stories at the beginning of this report – in Anne and Ben Hoover's story, Dick and Ruth Jean Unger's story, and Mary Ellen Fairbairn's story.

You will find yourself in these stories because their stories are about the impact that we have made, together, on their lives and on 25,000 other lives this past year. Their stories, in other words, are your stories.

For all of that, for all that you do for us and with us in service, for the impact you have made possible, my deepest thanks. 🌈

Peace and all good,



Pr. Glenn D. Miller

President, SpiriTrust Lutheran Foundation

Vice President of External Relations, SpiriTrust Lutheran



Pr. Glenn D. Miller

STOPPING THE HURT

For most individuals, being called names, being yelled at and criticized extensively, even violently, would be considered far beyond the bounds of “normal” behavior. But, in a home where domestic abuse is common, that tension and vulnerability is a normal accompaniment to everyday life. Words filled with hurt are strategically placed to build tension, which is designed to lead to an explosive incident that reduces the victim to cowering in fear. Abusers thrive in this type of environment.

According to the Pennsylvania Coalition Against Domestic Violence, York County ranked third in Pennsylvania with the most domestic violence fatalities and experienced a 114% increase in the fatality rate in 2015. SpiriTrust Lutheran®, through its Domestic Abuse Solutions program, has been at the forefront of rehabilitating abusers and restoring families for decades.


“It’s about a sense of entitlement,” explains Juanita Jones, program coordinator of SpiriTrust Lutheran Domestic Abuse Solutions. In 1988, specialized programs were created to assist and support abusers’ willingness to change their abusive behavior. The programs are a way to approach oppression in relationships by helping the abuser understand and realize what life is like for the victim, and to help the abuser to overcome their feelings of entitlement. With these programs serving 1,137 participants in York County last year alone, it’s easy to see the need.

While a majority of these programs are mainly geared towards rehabilitating men, SpiriTrust Lutheran has implemented a program for female



Fewer than 7% of participants are likely to be repeat offenders after completing the program.

abusers as well. Jones notes that men and women who become abusers are often victims themselves of domestic abuse. “It takes a community effort to deal with this issue and we must remain realistic and demand accountability,” says Jones. Key indicators show that fewer than 7% of program participants are likely to be repeat offenders after completing the program.

With the help of our donors, SpiriTrust Lutheran Domestic Abuse Solutions is able to help abusers to live a life of non-violence. We would like to thank our donors who have made such positive, successful programs in our community possible. Because of you, we are able to serve many individuals and reduce violence in our community. Thank you for making this happen through your partnership with us! 

REMEMBERING WHAT MATTERS

“Anne and I always said we are better at working than playing,” remembers Dr. Ben Hoover. Anne and Ben are both well-known and highly respected in the York community for their work – Ben is a retired physician and Anne is a longtime champion of the StrandCapital Performing Arts Center, working in a number of professional and volunteer positions, including serving three years as chair of the board of directors and as the interim chief executive officer twice.

Anne and Ben met through his sister while he was in medical school. “I wasn’t interested in any of my little sister’s friends and Anne didn’t want to date a doctor,” recalls Ben. However, their relationship blossomed after he escorted Anne to an annual event in York. They were married three years later and now have three grown children and four grandchildren.

increasingly worried about Anne’s health, and as a physician, he could see where things were going. The turning point came one day when she became confused and walked out of their home on a frigid day without her coat, ending up at a friends’ home.

“Anne was so smart that she was able to mask her disease for a while,” Ben recalls. But eventually, she began coming to terms with what was happening and confided in her family and close friends.

The Alzheimer’s disease diagnosis was not surprising to Ben or Anne – Ben was board certified in internal medicine and geriatrics and Anne recognized her own symptoms. But that knowledge didn’t make it any less devastating. As Anne’s condition continued to deteriorate, Ben knew that something needed to change, that he and Anne needed help.

Coupled with the beautiful secure facilities and the peaceful enclosed garden, the agency provides Ben and his family peace of mind.

Anne and Ben have shared a wonderful life – from family and community to travel, the arts and civic engagement.

About 10 years ago, Ben began to notice that Anne was struggling with everyday tasks, such as balancing the family’s checkbook – something that had always been a strength. Over the years he became

During Ben’s accomplished professional career, he came to respect the established reputation of SpiriTrust Lutheran® in nursing excellence. After learning about all the options for supportive care, including Memory Support care, Ben chose SpiriTrust Lutheran®, The Village of Sprenkle Drive to provide Anne’s care. Coupled with the beautiful secure



Anne and Ben Hoover

facilities and the peaceful enclosed garden, the agency provides Ben and his family peace of mind knowing that Anne is both safe and exceptionally well-cared for. The Village at Sprenkle Drive has been home ever since.

The new Memory Support Care Residence at The Village at Sprenkle Drive is just the latest example of our agency’s 65-year history of providing the best care possible for York County. SpiriTrust Lutheran is forever grateful for the York community’s remarkable support in helping to make this Community possible. Our donors’ partnership and commitment is what allows SpiriTrust Lutheran to provide care to friends like Anne and her beloved Ben every day. 🌿



SpiriTrust Lutheran Key Priorities for 2017 and Beyond

FRIENDS LIFE CARE

Designed to help you remain independent in your own home at any age, Friends Life Care helps you maximize your savings and prepare for unexpected changes in health, while providing innovative options to help increase vitality and longevity. If and when care is needed, your own personal “CCRC without walls” will provide that care via a trusted SpiriTrust Lutheran network of caregivers.

COMPLETING OUR FAMILY OF SERVICES IN CHAMERSBURG, PA

Funded in part by a multi-million dollar fundraising campaign, SpiriTrust Lutheran®, The Village at Luther Ridge will add a modern, 40-bed skilled care center and a comforting memory support care neighborhood. Of those 40 beds, 8 to 10 short-term rehabilitation beds will be dedicated to compliment the already existing and widely-respected, independent-living residences for seniors.

Plans are well underway as SpiriTrust Lutheran staff and volunteer leadership work together to make this dream a reality. Look forward to more announcements as planning continues.

GIVING... IN MORE WAYS THAN ONE

An Interview with Dick Unger

Dick and Ruth Jean Unger, like so many of their generation, have always understood what it means to give back. Even when they were younger raising their four children, they made philanthropy, particularly to their church, a priority.

Later in life, blessed with the fruits of a successful life, they took that commitment to a new level through the establishment of a donor advised fund.

“It’s probably not an exaggeration to say that in establishing the fund, we increased our overall giving many times over” says Dick. “Now, rather than writing checks for everything we want to support or deciding which stocks to gift, I just go to the computer and hit ‘send’, and off it goes”.

If the Ungers had stopped there, it would still be a great story of giving. But they didn’t. Dick recognized that the donor advised fund wasn’t only a convenience, it could also be a teaching tool. So, he established separate funds for each of his four children. And, then for his grandchildren. And, then for his great grandchildren. Today, Dick and Ruth Jean Unger have funded *24 separate donor advised funds*, providing charitable gift potential for four generations of the Unger family and the charities they care about.

...providing charitable gift potential for four generations.



Dick and Ruth Jean Unger

“My kids are all pretty giving people” Dick says. “And so I know they would have given to things even without this. But with these funds, it allows them to broaden their impact on their projects and causes.”

Dick and Ruth Jean have been good friends to SpiriTrust Lutheran, to their communities of faith in Gettysburg and Florida and to a host of other worthy causes. But, what makes their story so unique is that in addition to recognizing the need to “give back,” they’ve also recognized the need to pass that way of life onto the next generation. The next four generations actually. Like many others, they were already modeling what philanthropy truly means through their own giving. But they took it a step further — 24 steps further. Insuring that the Unger spirit of generosity continues for a very long time. 🌱

A CALLING TO SERVE

Volunteers have an immense impact on the people they are serving, but volunteering itself can have just as much of an effect on the volunteer. “It’s a special feeling. It’s a spiritual experience to be able to connect with others,” explains Mary Ellen Fairbairn, a resident and volunteer at SpiriTrust Lutheran®, The Village at Luther Ridge.

For more than a year now, Mary Ellen has volunteered for SpiriTrust Lutheran® Home Care & Hospice. Both Mary Ellen’s sister and mother received hospice care, so when Mary Ellen became a resident at The Village at Luther Ridge, she wanted to give back by volunteering at SpiriTrust Lutheran Home Care & Hospice. “I have felt a pull, or calling to do this. It’s me giving back for the wonderful care they received,” expressed Mary Ellen. So, when she got the call to visit with a new hospice client, she jumped at the

opportunity. Mary Ellen describes her time with him as a wonderful experience. “We talked for hours, and I learned so much about his remarkable life. He was filled with smiles, and you could tell he really enjoyed the conversation,” she remembers.

would not be possible without the emotional and social support our volunteers provide, as well as the financial support of our donors.

After the death of Mary Ellen’s hospice client, she

“I always seem to receive more than I give,” says Mary Ellen.

SpiriTrust Lutheran Home Care & Hospice served 12,537 clients in 2016. The program provides individuals and families with professional, compassionate caregivers who bring skilled home health services, in-home care, hospice care, and grief counseling directly to the home. The exceptional level of care provided by the program

continued to visit with his wife offering her support. Hospice volunteers often develop an ongoing relationship with family members. She brought “bereavement bread” and offered to make a “memory bear” for her. Mary Ellen started her volunteer work with SpiriTrust Lutheran making memory bears, which are handmade teddy bears, made from the clothing of the person who has died. It is just one of several unique programs SpiriTrust Lutheran offers in order to meet and support the needs of our clients.

“I always seem to receive more than I give,” says Mary Ellen. “Everybody that I have worked with has been so caring and supportive. I just love being part of the network of care.”

SpiriTrust Lutheran Home Care & Hospice provides a full range of services that support independence, quality of life, and peace of mind to the people we serve. Volunteers are a key component of that service, offering their time, talents, and companionship to assist in the mission of providing care and comfort to those who place their trust in us. 🌈



TRANSFORMATIONAL DONORS

SpiriTrust Lutheran® donors change and impact lives every day. Gifts provide compassionate care and help for the most vulnerable. On behalf of those served through SpiriTrust Lutheran, thank you for your generosity.

FOUNDER'S SOCIETY

Recognizes those donors whose lifetime cumulative giving (current and/or deferred) to SpiriTrust Lutheran totals \$1 million or more.

Harry B. and Marcella S. Fleck*

A gift from Harry and Marcella Fleck enabled SpiriTrust Lutheran to build the community center at The Village at Luther Ridge, where residents enjoy meals, play pool or games, exercise, use the library, or just socialize with other residents.

Gifts received from January 1, 2016 through December 31, 2016 are listed in the Community Impact Report. We strive to achieve the greatest level of accuracy possible. If an error is discovered, please accept our apologies and kindly contact the SpiriTrust Lutheran Foundation by calling 717.854.4425 or (toll free) 888.404.3500.

The P. H. Glatfelter Family

Five generations of Glatfelter family members have contributed regularly to the ministries of SpiriTrust Lutheran. Through their lifetimes, Philip H. Glatfelter II and Philip H. III have well exceeded \$1 million from estate gifts, and grants from perpetual foundations to the agency. Members of the current generations of the family continue to make SpiriTrust Lutheran and those we serve a philanthropic priority.

Carroll F. and Irene S. Hunt*

Carroll and Irene Hunt made significant gifts to SpiriTrust Lutheran during their lifetimes and left a generous gift in their estate. Their estate gift was used to benefit SpiriTrust Lutheran Senior Living.

Paul K. and Anna E. Shockey*

Mr. and Mrs. Shockey's gift established an endowment fund to provide benevolent care to residents at The Village at Luther Ridge who have outlived their resources.

The United Way of York County

For decades, the United Way of York County has been making grants from its Community Chest to various programs of SpiriTrust Lutheran. Those grants well exceed \$1 million. Other United Way agencies across our territory have added significantly to that total. We are truly grateful for our partnership with our United Way agencies.

“I support SpiriTrust Lutheran because I am a baptized Lutheran and wanted to help support the services that they provide to my community. I am a member of St. Matthew Lutheran Church in York and as a young girl I volunteered with the youth group at The Village at Kelly Drive. We would help residents on Sundays by assisting them to the Worship Service.”

~DANELLE N.

*denotes donors who are deceased



Linda Heckman, resident of SpiriTrust Lutheran® The Village at Utz Terrace, preparing to kayak.

PRESIDENT'S SOCIETY

Recognizes donors whose cumulative lifetime giving (current and/or deferred) to SpiriTrust Lutheran® totals \$100,000 or more.

Individuals

Mr. Gwilym G. Amos Sr. *
Miss Margaret O. Bailey *
Mr. and Mrs. Oren C. Bartenslager *
Mr. and Mrs. James V. Blouse *
Mr. and Mrs. Michael Boustead
Mr and Mrs. Robert B. Campbell *
Paul and Katherine G. Costello *
Mr. Merle L. Crumling *
Mrs. L. Lucille Demyanovich
Mr. Burnell M. * and Mrs. Ann C. Diehl
William S. Eisenhart Jr., Esquire *
Mr. and Mrs. William H. Elicker *
Mrs. Mary Froelich *
Mrs. Mildred J. Gabrielson *

Mr. and Mrs. Luther D. Geesey *
Mrs. Elizabeth M. Gitt *
Mr. and Mrs. Philip H. Glatfelter III *
Mr. and Mrs. William L. Glatfelter III
Miss Dorothy M. Goudy *
Mr. and Mrs. Emory E. Grove *
Mr. John L. and Mrs. Cora I. Grove *
Mr. Paul V. Hall *
Mr. Frank W. * and Mrs. Alice J. Haven
Mrs. Mary C. Hollar *
Mr. and Mrs. John Hollinger *
Mr. and Mrs. Clayton R. Krebs *
Mr. and Mrs. Sherman J. Krebs *
Mr. and Mrs. Frederick A. Lash *
Mrs. Mary C. M. Leyboldt *
Miss Mary C. Logan *
Mrs. Jane Marie McCleary *
Mr. and Mrs. Marion W. Milliron *
Mr. Thomas C. Mills Jr. *
Mr. and Mrs. Preston J. Moe
Mr. Donald B. Pennington *

Mrs. Anna L. Pensinger *
Mr. Elmer E. Raffensperger *
Mrs. Marian G. Rebert *
Mrs. Marie A. Riley *
Robert and Patricia Rundle
Ms. Elsie A. Sadler *
Mr. and Mrs. Richard D. Smith
Mr. and Mrs. Paul E. Sprenkle *
Mr. and Mrs. William F. Sprenkle Sr. *
Ms. Doris M. Steffy *
Mr. and Mrs. John M. Ulrich Jr.
Mrs. Lorraine S. Ward *
Fred A. and Naomi K. Werner *
Miss Amelia C. Winter *
Mrs. Trema S. Zimmerman *

Businesses

Alpha Media
BNY Mellon
Glatfelter Insurance Group
M&T Bank

Sodexo Senior Living
Thrivent Financial for Lutherans and its members

Churches

Christ Evangelical Lutheran Church, York
Lower Susquehanna Synod ELCA and its member congregations
Memorial Lutheran Church, Shippensburg
St. James Lutheran Church, Gettysburg
St. Luke Lutheran Church, Chambersburg
St. Matthew Lutheran Church, Hanover
St. Matthew Lutheran Church, York
St. Paul Lutheran Church, Hanover

Foundations

The Boustead Family Foundation, Inc.
The W. Dale Brougher Foundation
The Foundation for Enhancing Communities
— Charles and Carolyn Wood Fund
The Anne M. and Philip H. Glatfelter, III Family Foundation
The M&T Charitable Foundation
Alexander Stewart M.D. Foundation
Summit Endowment

Organizations

Auxiliary to SpiriTrust Lutheran,
The Village at Gettysburg
Auxiliary to SpiriTrust Lutheran,
The Village at Luther Ridge
Auxiliary to SpiriTrust Lutheran —
York County
United Way of Adams County
United Way of Franklin County

**denotes donors who are deceased*

LEGACY DONORS

HERITAGE SOCIETY

Recognizes individuals who:

- died in 2016 and left SpiriTrust Lutheran a gift in their estate
- notified the SpiriTrust Lutheran Foundation that they have made a bequest commitment to SpiriTrust Lutheran in their will
- committed to any other type of deferred or charitable estate gift for the benefit of SpiriTrust Lutheran.

Mr. Clarence T. Bartenslager *
Mrs. Alice J. Boeshore
Lyle Bowen
Mr. Robert A. Bowen
Mr. and Mrs. David L. Boyer
Fred V. and Lois E. Brandt
The Rev. Dr. John M. * and
Mrs. Elizabeth S. Brndjar
Ms. Alice Martin Brumbaugh
Mr. and Mrs. Robert E. Claycomb
Ms. Julia F. Cobb

Mr. Raymond C. Crawford
Mr. and Mrs. Sterling L. Crone
Ms. Elizabeth J. Dellinger
Mrs. L. Lucille Demyanovich
Mrs. Ann C. Diehl
Mrs. Norma Schroll Diehl
Mrs. Naomi D. Duncan
Mrs. Helen I. Dunnick
Mrs. Barbara J. Egan
Skip and Linda Elliott
Blair R. English and Jane English
Rosanna M. Felix
Mr. and Mrs. George W. Fishel, Jr.
Mrs. Sandra J. Fisher
Ms. Mary R. French *
Mr. Clyde C. Frey *
Mrs. Mildred J. Gabrielson *
Ms. Patricia Gaffney
Norma J. Gates *
Mr. John Golden
Blanche M. Hake
Mrs. Alice J. Haven
Earl R. Hessler * and Helen S. Hessler
Mrs. Elizabeth H. Hicks
Mrs. Donna R. Hilbinger

The Rev. Dr. and Mrs. Neal O. Hively
Mrs. Helen M. Hoffman
Mr. Ed Hughes
Mrs. Marie B. Kauffman
Mrs. Helen K. Keller *
Miss Mary Louise Klipp *
Mrs. Gloria L. Aughenbaugh Knobloch
Mrs. Diana B. Korssun
Mr. Paul R. Leiter *
Mrs. G. Mary Lincoln
Mrs. Esther M. Lippy *
Bobbi Little
Jeanne S. Little
Miss Mary C. Logan *
The Rev. Dr. and Philip A. Lynch
Mrs. Esther S. McBride
Mr. David C. McIntosh
Mr. T. Edward Middleton
Mr. and Mrs. Charles E. Miller
Drs. Edmund M* and Esther Miller
The Rev. and Mrs. Glenn D. Miller
Roma V. Miller
Mrs. Marian E. Mummert
Mrs. Charlotte L. Murphy *
Mr. and Mrs. Jack G. Nash

Mrs. Kathryn L. Newcomer
Mr. Henry P. Nielsen *
Mr. John P. O'Keefe
The Rev. Dr. Mark W. Oldenburg and
Mrs. Jill A. Schumann
Mr. Carl P. Phillips
Beth Reilly
Mrs. Marie A. Riley *
Robert and Patricia Rundle
The Rev. Dr. Arthur L. Ruths
The Rev. and Mrs. Richard A. Seaks
Mr. and Mrs. Loren Shepard
Mrs. Ruthanna M. Shoemaker
Mrs. Marjorie A. Simmons
Ms. Greta W. Smith
Mr. and Mrs. Richard D. Smith
Mrs. Sally E. Smith
Mrs. Erma K. Snyder
Mrs. Lois G. Snyder
The Rev. Herbert C. Spomer
Mr. David A. Sprenkle Jr.
The Rev. and Mrs. Richard L. Stare
Herman J. Starklauf Jr.
Roseanna M. Strevig
Bill and Joan Swanger
Jim and Vicki Thompson
Mr. Philip R. Tuhy *
Mrs. Verda K. Volz
Mr. and Mrs. Clifford C. Warren
Mrs. Mabel C. Werdebaugh *
Mrs. Helen S. Wingert
Kim and Luther Zarfoss
Mrs. Evelyn J. Ziegler

“Philanthropy to SpiriTrust Lutheran is essential to provide the high level of service our residents and clients have come to expect and cherish. Your thoughtful gift is meaningful and very much appreciated to continue our mission to serve others.”

~ROBERT BOWEN | Chair, Board of Directors, SpiriTrust Lutheran

*denotes donors who are deceased

SUSTAINING DONORS

GOLD LEADERSHIP CIRCLE

Donors who contributed \$10,000 or more in 2016.

Individuals

Mr. and Mrs. Michael Boustead
Mrs. Elizabeth S. Brndjar
Angela L. Dohrman and
Jonathan P. Whitney M.D.
Mrs. Helen S. Hessler
Mr. Peter Kareha
Robert and Patricia Rundle
The Rev. and Mrs. Richard A. Seaks
Mr. and Mrs. Richard D. Smith
Mr. B. Robert Snyder
Mr. and Mrs. John M. Ulrich Jr.
Mr. and Mrs. Richard L. Unger

Businesses

Alpha Media
Collens-Wagner Agency Inc.
Flagship Rehabilitation
Glatfelter Insurance Group
McConkey Insurance & Benefits
Sodexo Senior Living
Thrivent Financial for Lutherans
Warfel Construction Company

Churches

Lower Susquehanna Synod ELCA,
Harrisburg, and its member congregations
St. Matthew Lutheran Church, Hanover
St. Matthew Lutheran Church, York

Foundations

Margaret O. Bailey and Claudia E. Bailey
Fund of York County Community Foundation
The Boustead Family Foundation, Inc.
The W. Dale Brougher Foundation
The Anne M. and Philip H. Glatfelter, III
Family Foundation
The Arthur J. & Lee R. Glatfelter Foundation
The Hahn Home Fund of the York County
Community Foundation
The Kinsley Foundation
The M&T Charitable Foundation
PNC Foundation
Powder Mill Foundation
Paul K. and Anna E. Shockey Family
Foundation
Alexander Stewart M.D. Foundation
Vanguard Charitable Endowment Program

Organizations

Auxiliary to SpiriTrust Lutheran —
Chambersburg Chapter
Auxiliary to SpiriTrust Lutheran —
Gettysburg Chapter
Auxiliary to SpiriTrust Lutheran —
York Chapter
United Way of Franklin County
United Way of York County

Trusts

Hermit H. and Mary B. Deardorff
Charitable Trust
W. Emerson Gentzler Trust
Harry I. Gladfelter Trust
Miriam E. Hahn Trust
Charles J. Helb Trust
Alice K. Kime Trust
Lillian Esther Loucks Trust
Agnes Coreda Shatto Trust

SILVER LEADERSHIP CIRCLE

Donors who contributed \$5,000–
\$9,999 in 2016.

Individuals

Reed and Connie Anderson
Mr. and Mrs. Norman F. Basso
Mr. and Mrs. Anthony P. Campisi
Mr. Richard G. Draude
Mr. and Mrs. George W. Fishel Jr.
Blanche M. Hake
Mrs. Donna L. Hocker
Mrs. Jean A. Klein
Eugene L.* and Patricia A. McKay
Ms. Greta W. Smith
Joe and Susan Wagman

Businesses

Arnett Carbis Toothman LLP CPAs
& Advisors
The Asbury Group Integrated Technologies
BNY Mellon
Cedar Ridge Golf Course
The Graham Group
Noelker and Hull Associates, Inc.
PeoplesBank, A Codorus Valley Company
Reinsel Kuntz Leshar LLP
RLPS Architects
Travel Time/Travel Leaders, Lancaster
Trinity Pharmacy Services
UCP Central PA
Waste Connections, Inc.

Church

Memorial Lutheran Church, Shippensburg

Foundations

Lester W. Jr. and Kathryn E. Bentz Fund of
York Community Foundation
The Foundation for Enhancing Communities
— Charles and Carolyn Wood Fund

Organization

Exchange Club of Hanover, PA

Trusts

William H. Blouse Trust
Francis J. Braithwaite Trust
Philip H. Glatfelter Charitable Trust
Romaine H. Yagel Trust

*denotes donors who are deceased

SUSTAINING DONORS

BRONZE LEADERSHIP CIRCLE

Donors who contributed \$1,000–\$4,999 in 2016.

Individuals

Mrs. Madelyn M. Andrews
Mr. Louis J.* Appell Jr. and
Mrs. Josephine D. Appell
Mrs. Regina P. Arnold
Ms. Joanne M. Bankos
Mrs. Christina K. Bemus
Mr. and Mrs. Nelson H. Benedict
Mrs. Marguerite Bernstine
Jeff Boland
Mr. Robert A. Bowen
Mr. Charles Bruder
Mr. Thomas P. and
Mrs. Gretchen C. * Carbaugh
Henry and Edna Christ
Mr. and Mrs. Neil E. Coble
Mr. Robert Coover
Mrs. Glenda Cramer
Mr. and Mrs. Willard F. Daniels Jr.
Mrs. L. Lucille Demyanovich
Mrs. Donna J. Diehl
Mr. and Mrs. Culver W. Dunkleberger
Chloé R. Eichelberger
Mr. and Mrs. John L. Finlayson
Mr. Michael B. Glezer and
Mrs. Lisa Wagman Glezer
Ms. Holly H. Graff-Culhane
Mrs. Katherine E. Hershey and
Mr. Timothy J. Hershey
Carol D. Hess
Mrs. Marilyn S. Houck
Mr. and Mrs. John E. Jochem

Mrs. Janet Johnston
Mr. and Mrs. Ronald H. Kerr
Stephanie and Bryan Kessler
Mrs. R. Lynne Kiick
Mr. and Mrs. Jack W. King Jr.
Mr. and Mrs. Kerry Kopp
Dr. and Mrs. Samuel S. Laucks II
Mr. and Mrs. John A. Leeti
Mrs. Esther G. Little
The Rev. Canon David W. Lovelace
Mrs. Daun A. Metzler
The Rev. Dr. Jan Vladimir Michalko and
Judr. Marta Michalkova
Mr. and Mrs. Charles E. Miller
Dr. Esther J. Miller
The Rev. and Mrs. Glenn D. Miller
Mr. and Mrs. George C. Mitch
Mr. and Mrs. Preston J. Moe
Mr. Dana L. Morrison
Keith and Joan Mummert
Ms. Penelope Myers
Mr. and Mrs. Pascal Nardelli
Mrs. Doris Neilson
Mr. and Mrs. Jerry R. Neth
Dr. and Mrs. W. Jay Nicholson
Mr. and Mrs. Thomas C. Norris
Mr. and Mrs. Joseph P. O'Connell
Ms. Leah Page
Mrs. Yvonne K. Pasanen
Mr. and Mrs. David W. Rempel
Helen L. Renner, Ph.D.

Charlotte Mullinix, resident, and Laurie
Moore, Wellness Director of SpiriTrust
Lutheran®, The Village at Utz Terrace.

Dr. Andrea Resciniti
Mr. and Mrs. Randy L. Rock
Revena and Andrew Rossi
Mr. Jon Rothschild
Mrs. Ginnee L. Rudisill
Mr. and Mrs. Robert L. Rundle Sr.
Mr. and Mrs. John W. Schilling
Ms. Pamela J. Sessi
Terry and Jeffery Shade
Mrs. Lois G. Snyder
The Rev. Herbert C. Spomer
Chaplain and Mrs. Gustaf H. Steinhilber
The Revs. Eric B. and Joanne P. Stenman
Mr. Nils Stenman
Ms. Carol L. Stevens
Mr. and Mrs. Ryan Stevens
Mr. and Mrs. Kenneth E. Sweigart
Jim and Vicki Thompson
Mrs. Anna Mae Utz
Mr. and Mrs. William J.A. VandenHeuvel
Mrs. Verda K. Volz
Mr. and Mrs. William J. Von Schlichten
Kenneth and Katie Watts

Mr. and Mrs. Walter G. Wilson
Mr. and Mrs. Donald A. Wissner
Kim and Luther Zarfoss

Businesses

AIA - Benefits Resource Group
Bailey Trailways
Baker Tilly Virchow Krause, LLP
Bank of America United Way Campaign
Barley Snyder
Brechtbill & Helman Construction Company
Centurion Group
Diakon Lutheran Social Ministries
Edge Insights
F & M Trust Company
Fidelity Charitable Gift Fund —
Kiick Family Trust
Graphics Universal Inc.
Highmark Blue Shield
Kinsley Construction, Inc.
Knouse Foods Cooperative, Inc.
Kronos Post Acute Care & Senior Living

**denotes donors who are deceased*



Latsha Davis & McKenna PC
 LeTort Trust
 M&T Bank
 Public Opinion
 Ralph E. Tolbert Masonry, Inc.
 Ream Printing Company, Incorporated
 RGS Associates
 Rutter's Farm Stores
 Shipley Energy
 Stambaugh Ness
 Stock and Leader
 Strait Steel Inc.
 Strathmeyer Landscape
 Summit Health
 Surgical Associates of Concord, P.C.
 Transamerica Retirement Solutions Corporation
 Wagman Construction Inc.
 WellSpan Health

Churches

Advent Lutheran Church, York
 Calvary Lutheran Church, Dover
 Canadochly Lutheran Church, York
 Christ (Aspers) Lutheran Church, Aspers
 Christ (Roths) Lutheran Church, Spring Grove
 Christ Evangelical Lutheran Church, York
 Jacob's Church, Fairfield
 Solomon's Evangelical Lutheran Church, Chambersburg
 St. James (Wenksville) Lutheran Church, Bendersville
 St. James Lutheran Church, Gettysburg
 St. Luke Lutheran Church, Chambersburg
 St. Mark Lutheran Church, York

St. Peter's Lutheran Church, York
 St. Stephens Lutheran Church, Greencastle
 Trinity Lutheran Church, Chambersburg

Foundations

Adams County Community Foundation
 The Graham Foundation
 The Elmer E. Naugle Foundation
 Renaissance Charitable Foundation — Regina P. Arnold Family Fund
 Wagman Corporate Community Fund of York County Community Foundation
 York County Community Foundation

Organizations

SpiriTrust Lutheran, The Village at Kelly Drive Worship Fund
 United Way of Adams County
 United Way of Greater Hazleton
 VFW Post 1599
 Viking Athletic Association
 White Rose Senior Center

Trusts

Walter and Bessie Cooper Trust
 Garretson Family Charitable Trust
 Joseph F. Hasskarl Trust
 Alice and Harold Holcombe Memorial Trust
 H. Kathryn Hoover Trust
 Richard and Mary K. Hosfeld Memorial Trust
 Grace H. Hostetter Trust
 Frank B. Leidig Charitable Remainder Trust
 Robert L. Lohr Trust
 Helen M. Lucas Charitable TUW
 Mildred H. McCleary Charitable LeadTrust

THE PARTNERS CIRCLE

Donors who contributed \$500–\$999 in 2016.

Individuals

Mr. and Mrs. Phil Biesecker
 Mr. and Mrs. Brett Biggs
 Mrs. Carolyn M. Bindeman
 Mr. James H. Bishop
 Mr. Ryan Blas
 Mr. Maurice H. Bobst Jr.
 Mr. Charles F. Booth Jr.
 Lyle Bowen
 Mr. William Boyer
 Meg and Peter Brubaker
 Mr. and Mrs. Matthew A. Crone
 Mr. and Mrs. William K. Crosson
 Don and Jane Dellinger
 Ms. Elizabeth J. Dellinger
 Ms. Julianne S. Devaney
 Mr. and Mrs. Kirk Diehl
 Ms. Lauren Eby
 Mr. John Fairchild and Dr. Lauraine Hawkins
 Lona M. Farr, Ph.D., ACFRE
 Mr. and Mrs. Fred Fay
 Mr. and Mrs. James D. Flinchbaugh
 Mrs. Laura L. Frye-Blue
 Mrs. Karen George
 Mr. and Mrs. Brian Gross
 Mr. Ed Hughes
 Mr. Jeffrey Huss
 Mrs. Kathy F. Johnson
 Mr. and Mrs. Walter Kingera
 Mr. and Mrs. John P. Knobloch
 Mrs. Beatrice J. Kohler *



Ethel Probst, resident of SpiriTrust® Lutheran, The Village at Luther Ridge, and Rob Kauffman, PA State Representative, celebrating her 100th birthday.

Mrs. Susan W. Krick-Everhart
 Ms. Alice Leone
 Jeanne S. Little
 Mrs. Catherine C. Lynn
 Mr. Wayne W. Miller
 Mrs. Sue E. Nace
 Mr. Larry R. Nicarry
 Mr. and Mrs. Phillip P. Null
 Mr. and Mrs. William Patrick
 Mr. Scott Pidcock
 Mr. and Mrs. George M. Pittman
 Mr. and Mrs. Kenneth H. Plummer Jr.
 Mr. and Mrs. Jess W. Queen
 Beth Reilly
 Mr. and Mrs. John M. Rinehart
 Mark and Maria Royce
 Ms. Ana B. Sanchez

*denotes donors who are deceased

SUSTAINING DONORS

THE PARTNERS CIRCLE (CONT.)

Ms. Margaret M. Shanbarger
Dale and Betsy Smith
Mr. and Mrs. Nathan Sterner
Chaplain Daniel Summers
Bill and Joan Swanger
Mr. and Mrs. Charles R. Szarowski Jr.
Mrs. Joanne C. Thompson
Mr. and Mrs. Raymond J. Tomasic
Mrs. Lorna M. Uphold
Mr. and Mrs. A. Dwight Utz
Ms. Leila W. Vesper
Mr. Mark A. Wallsten
Claire S. Weaver CPA
Mr. and Mrs. Ronald E. Wentz
Mr. and Mrs. C. Wayne Winemiller
Mr. and Mrs. Barry H. Wolfe
Mr. and Mrs. John R. Wolfe Jr.
Mr. and Mrs. Timothy E. Wood
Mrs. Deborah A. Zeller

Businesses

ACNB Bank
Art Sign Company
Benevity Community Impact Fund

Branch Banking & Trust (BB&T)
C&S Wholesale Grocers
Cloud10 Communications
CRS Insurance, Inc.
DiLoreto, Cosentino & Bolinger PC
DL Martin Company
Elizabeth Properties
Exelon Corporation
Fulton County Medical Center
Hanover Nissan
Jennings Chevrolet, Buick, GMC, Inc.
Johnson & Johnson Family of Companies
Johnson Controls
Kegerreis Outdoor Advertising, LLC
Lady Moon Farms, Inc.
Maryland and Virginia Milk Producers
Cooperative Association
McCleary Oil Company, Inc.
Mercersburg Printing, Inc.
MMS Advancement Associates LLC
Phillips Office Solutions
Thomas L. Geisel Funeral Home Inc.
Thrivent Financial for Lutherans Franklin-
Fulton Chapter
W.C. & A.N. Miller Development Company
Wagman Companies, Inc.
York Traditions Bank

Churches

Christ Lutheran Church, Conyngham
Christ Lutheran Church, Hazleton
Christ Lutheran Church (Spry), York
Emanuel Lutheran Church, Red Lion
Presbyterian Church of Falling Spring
Rohlers Lutheran Church, Dover
Salem Lutheran Church, Chambersburg
Shiloh Lutheran Church, York
St. James Lutheran Church, Hellam
St. John Episcopal Church, York
St. Paul (Broadway) Lutheran Church,
Hanover
St. Paul Lutheran Church, Fayetteville
St. Paul Lutheran Church, York
West Hazleton Trinity Lutheran Church,
West Hazleton

Foundations

The Merck Foundation
The Rotary Foundation Donor Advised Fund

Organizations

Amvets Post 224
Chambersburg Club, Inc.
Combined Federal Campaign of the
National Capital Area



Residents of SpiriTrust Lutheran®, The Village at Utz Terrace displaying artwork.

Sweet Adelines International Freedom Valley
Chapter
Truist, New York
United Way of Summit County, Ohio
United Way of the Greater Lehigh Valley

Trusts

Robert N. Boerner Trust
Charles A. Smith and Phyllis J. Smith
Charitable Remainder Unitrust

**denotes donors who are deceased*

“I support SpiriTrust Lutheran because the agency is unique — it provides valuable, worthwhile services that would otherwise not be provided to our communities.”

~LESLIE B.



THE FRIENDS CIRCLE

Donors who contributed \$100–\$499 in 2016.

Individuals

Mrs. Betty J. Aguirre
Mr. and Mrs. Peter D. Alexander
Mr. and Mrs. Jerry L. Allison
Mrs. Ruth S. Alpaugh
Mr. Christopher Amery
Ms. Kateri R. Amrhein

Mr. and Mrs. Michael Amsler
Mrs. Phyllis J. Amsley-Drawbaugh
Mrs. Rose E. Anderson
Amy G. Anstine CPA
Mrs. Cheryl A. Anthony
Mr. and Mrs. Dennis R. Anthony
Mr. Charles R. Appler
Mr. and Mrs. Thomas E. Arvin
Mr. Charles Babb
Mrs. Dinah L. Bailey
Mr. and Mrs. John W. Bailey

Mr. and Mrs. Michael J. Baker
Mrs. Selene F. Baker Scavit
The Rev. and Mrs. James L. Banach
Mr. and Mrs. Larry Barnes
Ms. Terri Bartholomew
Mr. and Mrs. Howard Bates
Mrs. Wanda D. Bates
Mr. and Mrs. Richard A. Beatty Jr.
Ms. Elizabeth Bechtel
Mr. and Mrs. Stephen E. Beck
Mr. and Mrs. Thomas E. Beck
Mr. Carl A. Benchoff
Mrs. Constance E. Benedict
Ms. W. Jean Benedict
Mr. and Mrs. George E. Bennett
Ms. Karin L. Bennett
Mr. Michael Bennis
Mrs. Kathryn E. Bentz
Mr. Art Berman
Doug and Kristin Berman
Mrs. Dorcas Bernheisel
Mrs. Marie Bernlohr
Mr. and Mrs. Richard G. Bert
Mr. Donald R. Betz
Mr. and Mrs. John E. Biava
Ms. Karen D. Bierbower
Ms. Sharon Bigler
Mr. and Mrs. Michael Billet
Mr. and Mrs. Gareth V. Biser
Miss Beverly Bittle
Mrs. Doris K. Black
Mr. and Mrs. Richard Blackshire
Ms. Courtney Blahosky
Mr. and Mrs. Frank F. Bodenberg
Chris Borcik
Ms. Tiffany Bowersox

Mrs. Sheila Bowmaster
Mr. and Mrs. David L. Boyer
Mr. Richard S. Brandt Jr.
Mr. and Mrs. Leslie W. Brant
The Rev. and Mrs. Michael R. Brendle
The Rev. Dr. and Mrs. Paul L. Brndjar
Ms. Elaine E. Brogan
Mr. Michael A. Brone
Mr. and Mrs. Tim Brooks
Mr. and Mrs. Jay P. Brown
Mr. Richard H. Brown
Ms. Equilla L. Burns
Mr. and Mrs. Anthony Bushey
Ms. Donna J. Butz
Mr. and Mrs. Stephen A. Byler
Mr. and Mrs. James Byrnes
Mrs. Mary L. Chalfant-Basehore
Mr. James E. Charlton
Ms. Diane Scarlett Chavez
Mr. and Mrs. Edward F. Clancy
Mr. and Mrs. Robert E. Claycomb
Mr. and Mrs. Anthony Colangelo
Mr. and Mrs. Mark Colangelo
Mr. and Mrs. William G. Coleman
Ms. Lauren J. Conley
Mr. and Mrs. Arthur L. Conrad Jr.
Ms. Pamela A. Conrad
Mr. Robert Cook and
Mrs. Cheryl L. Pedersen
Ms. Cindy S. Cooley
Ms. Joyce Cordell
Frank Countess, Esq.
Mrs. Peggy J. Craven
The Rev. and Mrs. Fred T. Crawford
John and Lynne Crist
Miss Lenore E. Cronlund

**denotes donors who are deceased*

SUSTAINING DONORS

THE FRIENDS CIRCLE (CONT.)

Mr. and Mrs. Ron Cummings
Mr. and Mrs. Charles G. Curie
Mr. Cornelius Curran
Mr. and Mrs. Walter R. Dallas
Mr. and Mrs. Allan M. Dameshek
Mr. and Mrs. James Darlington
Ms. Ann P. Daunic
Ms. Pamela Davies
Mrs. Glenda Dayhoff
Mr. and Mrs. John Deisinger
Mr. and Mrs. Vincent C. Deluzio
Mrs. Judith Derr
Mr. and Mrs. Donald W. Detwiler
Mr. and Mrs. Howard C. Dew
Mrs. Norma Schroll Diehl
Mr. and Mrs. Richard L. Diehl
Mr. and Mrs. Ray H. Diller
Mr. and Mrs. Ralph E. Doner
Mr. and Mrs. Scott Donner
Mr. and Mrs. John B. Donovan
Ms. Brenda J. Drawbaugh
Ms. Danna L. Drescher
Mr. and Mrs. John J. Dropp
Mr. James F. Druck
Ms. June Duffee
Mr. and Mrs. Gregory A. Duffey
Mr. George D. Dulebohn
The Rev. and Mrs. Jeffry Dull
Mrs. Naomi D. Duncan
Bishop and Mrs. James S. Dunlop
Mr. and Mrs. Gary Easton
Mr. and Mrs. Menno Eby
Mr. Sidney S. Ehrhart

Keith and Kimberly Eldredge
Mr. Richard D Eline
Mr. Matthew Emig
Mr. and Mrs. Terry K. Engdahl
Mr. and Mrs. Paul Englert
Mrs. Louise A. Ensz
Mr. and Mrs. David V. Erickson
Mrs. Mary Ann Ernst
Mr. and Mrs. Henry H. Eshleman
Mr. and Mrs. Mark D. Evans
Mr. Robert C. Eveler
Mr. and Mrs. Dwight Fadenrecht
Mr. Richard Fair
Mr. Michael Fairchild
Mr. and Mrs. Henry W. Ferree Jr.
Mr. Lance Ferree
Mr. and Mrs. Ronald D. Finn
Mr. and Mrs. James R. Finucane
Mr. James Fitzpatrick
Mrs. Jennie H. Flay
Mr. David E. Flesner
Mr. Brian Fletcher
Mr. and Mrs. Jim Fletcher
Mr. Dennis and Mrs. Linda S. * Flickinger
Mr. and Mrs. Jeffrey E. Flickinger
Mr. Gary S. Flora
Ms. Mary A. Fogelsonger
Mr. James F. Folk
The Rev's Stephen and Beth Folkemer
Mr. and Mrs. Toni R. Forrester
Mr. and Mrs. Bill Fox
Mrs. Nancy J. Fox
Mr. and Mrs. Lance Frace
Mr. and Mrs. John H. Frantz
Mrs. Joan C. Franz
Mrs. Sondra G. Fries

Mr. and Mrs. Edward R. Frome
Mr. Gerald L. Fry
Mr. Todd G. Fry
Mr. Harold C. Gabler Jr.
Mr. Ben Gajewski
Mr. and Mrs. David R. Gale
Mr. Brian G. Gallagher
Mr. Domenic Gallo
Robert Gantz
Mr. Jeffrey A. Garland
Mr. and Mrs. Larry Garnes
Mr. and Mrs. Harold R. Garretson
Mr. and Mrs. Kelly Garrett
Mr. and Mrs. Thomas A. Garver
Mr. and Mrs. Thomas L. Geisel
Mr. Louis W. Gentile
Mr. and Mrs. Frederick J. Gerardine Jr.
Ms. SueEllen Getka
Mrs. Lorraine S. Gettier
Mr. and Mrs. Thomas B. Gibbs
Mrs. Lois P. Gibson
Mrs. Shelva J. Gise
Mr. and Mrs. George W. Gladd
Mr. and Mrs. David L. Gladhill Jr.
Mr. Jeffrey R. Gochoco
Mr. Richard B. Godman Sr.
Mr. and Mrs. Richard R. Golden
Mrs. Lois J. Gonder
Rob and Becky Gratalo
Mr. Robert B. Greer III
Mr. and Mrs. Nick Gribble
Ms. Janet Gross
Mr. and Mrs. Larry D. Gross
Mr. Ray L. Gross
Mr. and Mrs. Ronald O. Grove
Ms. Janice M. Grunenwald

Mr. William Gulliver
Mr. Charles M. Gutshall
The Rev. and Mrs. Paul Haack
Ms. Tamra S. Habbershon
Mr. and Mrs. Charles J. Haberkorn
Ms. Sharon Hall
Dr. Berge Hampar and Mrs. Catherine J. Hunt
Mr. Matthew Harrington
Mr. and Mrs. Don Harris
Mr. and Mrs. Stewart E. Hartman Jr.
Ms. Julia S. Harvey
Ms. Kimberly Harvey
Mr. J. Larry Hawk
Mrs. Isabel Hayhurst
Ms. Susan Heathcoat
Mr. Thomas T.* and Mrs. Shirley L. Heckard
Mrs. Phyllis M. Hege
Mr. and Mrs. Timothy H. Hege
Ms. Wendy L. Heiland
Mr. and Mrs. Gregory F. Heinbaugh
Mrs. Winifred O. Helman
Mr. and Mrs. Carroll E. Henderson
Dr. Sherman Hendrix and
The Rev. Carol S. Hendrix
Mr. and Mrs. Charles J. Herber
The Rev. David E. Herlan
Mr. and Mrs. Ryan Herrington
Mr. and Mrs. Ricky L. Hessong
Mrs. Marie E. Hetrick
Mr. and Mrs. Richard H. Hinline Jr.
The Rev. and Mrs. Howard Hinkeldey
The Rev. Dr. and Mrs. Neal O. Hively
The Rev. and Mrs. Stephen Hluchy
Mr. Andrew D.* and Mrs. Rosalie A. Hobbs
Mr. and Mrs. J. Michael Hoffman
Ms. Marcia G. Hoffman

**denotes donors who are deceased*

Mr. Michael A. Hoffman
 Mr. Robert A. Hoffman
 Mr. Gerry Hoffner
 Mr. Thomas J. Hollenshead
 Ms. Cindy Hollingshead
 Mr. Luther Hollingshead
 Ms. Sharon K. Holoviak
 Mr. and Mrs. John Holtry
 Mr. and Mrs. Alan Hoover
 Ms. Christine Maloni Hoover
 Ms. Melissa A. Hopkins
 Mr. and Mrs. Marlin Horst
 Mr. Stephen N. House
 Mrs. Janice Hovellmann
 Mr. and Mrs. John S. Howard
 Mr. and Mrs. Michael E. Howe
 Ms. Patricia Hower
 Ms. Kay Hubbell
 Mr. Barry Huber
 Crystal and Mark Hull

Mr. and Mrs. John M. Hull III
 Mr. Evan Ibrahim
 Mr. Scott K. Irwin
 Mr. and Mrs. Tom Jacob
 Mrs. Carol Jarvis
 Mr. and Mrs. Adam Johnson
 Mr. and Mrs. Cameron S. Johnson
 Mr. Henry A. Johnson III
 Mr. and Mrs. Walt Johnson
 Mrs. Esther J. Jolly
 Mrs. Juanita Jones
 Mr. Gregory A. Joy
 Dr. and Mrs. Jack Karabasz
 Mr. Stephen Kareha
 Mr. and Mrs. William H. Kauffman Jr.
 Mr. and Mrs. Roy A. Keefer
 Ms. N. Darlene Kegg
 Ms. Kay O. Keirn
 Ms. Mary Keiser
 Mrs. Elizabeth A. Keller

Mr. W. David Keller
 Mr. Walter H. Keller
 Mr. and Mrs. Larry L. Kendle
 Mr. and Mrs. W. Austin Kenly
 Mr. Gerald Kerr
 Muhammad Farooq Khokhar M.D.
 Ms. Donna W. Kilgore
 Mr. and Mrs. Karl K. Kindel
 Ms. Tammy King
 Mrs. Dorothy L. Kitzmiller
 Mr. Jeffrey Klein
 Mr. C. Herbert Klinepeter
 Mr. Michael E. Knaub
 Mr. and Mrs. Michael K. Kniley
 Ms. Mary Kobal
 Mr. Robert M. Koenig
 Mr. and Mrs. Craig Kollar
 Mrs. Ruth G. Kopp
 Mr. John Kozyra
 Mr. Leroy E. Krebs
 Ms. Diane C. Kroszkewicz-Klouser
 Mr. and Mrs. Adam T. Kruzic
 Mrs. Norma J. Kumerow
 Ms. Barbara J. Kunkel
 Mr. Matt Kuntz
 Mr. Marc Kuster
 Mr. and Mrs. Gary L. Laabs
 Chris Lakatos
 Wendy and John Lakatos
 Mr. and Mrs. Fred L. Landis II
 Mrs. Dorothy A. Lane
 Ms. Susan Lane
 Mrs. Barbara E. Larson
 Ms. Colette Lawrence
 Mr. and Mrs. Ronald E. Lawrence
 Mrs. Barbara K. Lawver

Stanton S. Leboutitz M.D.
 Chris Lee
 Ms. Caryl A. Legat
 Ms. Christina O. Lemley
 Ms. Ruth Ann Leshar
 Mr. Craig Lewis
 Mrs. G. Mary Lincoln
 Mr. and Mrs. Rick Linders
 Mr. Herman Lloyd
 Ms. Maria I. Lopez-Berrios
 Mrs. Michelle Loucks
 Mrs. Lucille S. Loy
 Mr. Adam Loyack
 Mrs. Melissa L. Luckenbaugh
 Mrs. Jean Luks
 Ms. Stacy L. Luks
 Mr. Gregory A. Lupp
 Mr. John M. Makara
 Mrs. Charlotte I. Malcolm
 Ms. Ursula M. Mann
 Mrs. Barbara E. Martin
 Mr. C. Lester * Martin Jr. and
 Mrs. Laura D. Martin
 Mrs. Mary N. Martinez
 Mr. Karl J. Mattson
 Mr. and Mrs. Donald Mayer Jr.
 Mr. and Mrs. Dan S. Mayes
 Mrs. Esther S. McBride
 Ms. Barbara A. McCarthy
 Mr. David L. McCleary
 The Rev. and Mrs. Robert S. McElroy III
 Ms. Linda A. McFarland
 Ms. Carolyn A. McGonigle
 Ms. Carolyn M. McGonigle
 Mr. and Mrs. John P. McHale
 Mr. David C. McIntosh

**denotes donors who are deceased*

Residents of SpiriTrust Lutheran®, The Village at Sprenkle Drive.



SUSTAINING DONORS



THE FRIENDS CIRCLE (CONT.)

Mr. Tim McKee
Mr. and Mrs. Jack McLaughlin
Mr. and Mrs. Scott A. McNair
The Rev. and Mrs. Ronald F. Mease
Mr. and Mrs. Lynn A. Meckley
Mr. Richard G. Meckley
Mr. and Mrs. John A. Meeker
Mr. and Mrs. Gregory L. Melius
Ms. Stacy Mellott
Mr. and Mrs. Robert L. Mentzer
Mrs. Margaret Merlie
Ms. Mary Merriman
Mr. and Mrs. Christian E. Meyers

Ms. Karen J. Meyers
Mr. T. Edward Middleton
Ms. Helen P. Miller
Larry and Beverly Miller
Mr. and Mrs. Larry J. Miller
Mr. and Mrs. Nicholas J. Miller
Ms. Rebecca C. Miller
Mr. and Mrs. Samuel L. Miller
Ms. Sherri L. Miller
Mr. and Mrs. Alfred L. Moatz Jr.
Ms. Rhonda A. Mojica
Mr. Anthony Molinari
Mr. Paul Mongillo
Mr. and Mrs. Terry A. Monn
Mrs. Barbara S. Montgomery

Dr. and Mrs. Carey A. Moore
Mr. and Mrs. James P. Morgan
Ms. Ruth Morgan
Mr. Mark Mossman
Mr. and Mrs. Rick L. Mouer
Mrs. Tammy J. Moyer
Ms. Aleecia M. Moyer
Duane and Kristin Moyer
Mr. and Mrs. Richard S. Mullinix
Mr. and Mrs. Richard A. Mullenwey
Mr. David C. Mummert
M. J. Murawski
Mr. and Mrs. Kevin Murphy
Mr. Don Murray
Mr. and Mrs. Cleathon Myers
Ms. Julie A. Myers
Mr. and Mrs. Jack G. Nash
Mrs. Frances D. Neuder
Mrs. Alice J. Neville
Mr. and Mrs. Ray L. Nicarry
Mr. Timothy Nichol
Mr. and Mrs. James Nicholson
Mr. and Mrs. Bradley B. Nickey
The Rev. and Mrs. William B. Nienstedt
Mr. Jack J. Norrie
Mrs. Candace E. Norris
Mr. Richard C. North and
Mrs. Linda S. Smith
The Rev. and Mrs. Orville W. Nyblade
Ms. Roberta W. Oberdick
Mr. and Mrs. Patrick O'Donnell
Mr. and Mrs. Tony Odorski
Mr. John Olkowski
Mr. and Mrs. Allen L. Otey
Mrs. Delores Ott
Mr. and Mrs. Richard Ott

Mr. and Mrs. Harry Palmer
Mr. R C. Parker
Mr. William E. Parker
Sean Parkins
Ms. Raye Passmore
Ms. Susan M. K. Paul
Mr. and Mrs. Douglas R. Peck
Mrs. Shirley S. Pensinger
Mr. and Mrs. Michael J. Perich
Mr. and Mrs. John A. Persun
Mrs. Lisa Peters
Ms. Bonnie Peterson
Ms. Dianne M. Piparato
Mrs. Teresa A. Plank
Ms. Doris L. Plunkert
Mrs. Genevieve L. Porter
Ms. Summer A. Poteet
Ms. Stephanie Powell
Ms. Rebecca Powers
Susan Quimby
Ms. Mary W. Quinn
Mr. Rodney R. Ralleta and
Mrs. Kelly M. Wright
Mr. and Mrs. Harold W. Raubenstine
Mr. and Mrs. Theodore Rauhauser
Ms. Marjorie A. Rawhouser
Mr. and Mrs. Raymond Rebert
Ms. Carol A. Reed
Ms. Linda K. Reed
Mr. and Mrs. Donald Reichard
The Rev. and Mrs. Richard D. Reichard
Mr. and Mrs. Terry Reisinger
Ms. Selina A. Reuter
Mrs. Anna J. Rice
Mrs. Janet S. Rice
Ms. Lana Rife



Esther McBride, resident of SpiriTrust Lutheran®, The Village at Luther Ridge.

**denotes donors who are deceased*

Mrs. Eileen J. Rinehart
 Ms. Valerie Rittle
 Mr. and Mrs. Carmen Rizzo
 Mrs. Beverly J. Robinson
 Mrs. Jean E. Rock
 Martin and Carolyn Rock
 Ms. Annette K. Roderick
 Mr. and Mrs. M. Todd Roland
 Ms. Dawn L. Rossman
 Ms. Linda A. Rothermel
 Mr. Stephen Routh
 Mr. and Mrs. Frederick G. Rummel
 Mr. and Mrs. Max W. Rush
 Mr. and Mrs. James Russell
 Mrs. Patsy G. Saber
 Mr. and Mrs. Joseph W. Sabold
 Mr. and Mrs. Myron M. Saterbak
 Mr. John Satkovich
 Dr. Patricia W. Savage and
 Dr. Roger B. Johnson
 Mr. David A. * and Mrs.
 Doris Schattschneider
 Mr. and Mrs. Wayne N. Schelle
 The Rev. Beth A. Schlegel
 Ms. Faye A. Schlenger
 Mrs. Helen H. Schmidt
 Ms. Cynthia Schneider
 Mr. Joseph C. Schneider
 Mr. and Mrs. Walter M. Schneider
 Mr. and Mrs. Michael S. Schriver
 Mr. and Mrs. Eugene F. Schultz
 Mr. Charles Scott
 Mr. and Mrs. Gary L. Seacrest
 Mr. Richard F. Secrest
 Mr. and Mrs. Ralph W. Sell Jr.
 Ms. Kristina Sempowski

“Thanks to our very kind and generous donors, SpiriTrust Lutheran is able to continue its mission of providing exceptional health, human and senior living services to help individuals and families in our community achieve an optimal quality of life. Thank you to all our donors for your generosity, compassion and steadfast support of our mission.”

~TONY CAMPISI | Chair, Foundation Board of Trustees

Mr. William Senft
 Mr. and Mrs. Donald E. Seville
 Mr. and Mrs. Gregory L. Seylar
 Mr. and Mrs. Freeland E. Shaffer
 Mr. and Mrs. Richard E. Shaffer
 Mr. Roy Shaw
 Ms. Jody Shawley
 Ms. Debbie J. Sheffler
 The Rev. and Mrs. Kevin T. Shively
 Ms. Nancy Shively
 Mr. and Mrs. Elvin Richard Shives
 Ms. Shirley Shore
 Mr. Eldon L. Showalter
 Dr. and Mrs. W. Raymond Siegart
 Mr. Josh Silverman
 Jarod and Carolyn Simpson
 Mr. Richard A. Sites Sr.
 Mrs. Leslie L. Sleicher
 Mr. and Mrs. Jacob W. Slyder Jr.
 Ms. Christine A. Smith
 Mr. Frank Smith III
 Mr. and Mrs. Frederick C. Smith Jr.
 Ms. Ida Jeanne Smith
 Mr. Richard Smulovitz

Mr. and Mrs. Richard Q. Snurr
 Mrs. Erma K. Snyder
 Rev. Faye C. Snyder
 Mr. and Mrs. Mark A. Snyder
 The Rev. and Mrs. William C. Snyder
 Mr. and Mrs. Ralph A. Sorensen
 Ms. Debra Sowers
 Dr. and Mrs. Luther B. Sowers
 Mr. and Mrs. Stanley R Spain
 Mrs. Susan Spano
 Dr. Paul F. Spears
 Mrs. Beverly Speight-Mohamed
 Mr. and Mrs. David E. Sprengle
 Dr. Beverly A. Stanton
 Ms. Rena M. Stare
 Mrs. E. Doris Staude
 Mr. and Mrs. Michael T. Stefanski
 Ms. Athene Steinke
 Mr. John Stenger
 Mr. Kenneth E. Stepler
 Ms. Betty J. Stewart
 Mrs. Carolyn A. Stiles
 Mr. and Mrs. Raymond W. Stock
 Mr. and Mrs. John R. Stoner

Michael and Ellen Stoner
 Mr. and Mrs. Timothy R. Stoner
 Mr. and Mrs. Allen L. Strausner
 Mr. Harold R. Streett
 Mr. and Mrs. Ronald W. Strevig
 The Rev. Dr. Nelson T. Strobert
 Ms. Janet Student
 Mrs. Gretchen P. Stuempfle
 Mr. Gonzalo Suarez-Perez
 Ms. Cynthia Sutton
 Mrs. Cathy A. Sweeney
 Ms. Stephanie B. Szobota
 Mr. and Mrs. Richard C. Tardosky
 Mr. Vincent J. Tassone
 Mr. and Mrs. Marno A. Tavarez
 Mrs. Connie M. Taylor
 Mrs. Joycelyn M. Taylor
 Mr. Helmut Thiel
 Ms. Angela Thomas
 Mr. and Mrs. Paul W. Thomas
 Mrs. Dorothy M. Thompson
 Mr. and Mrs. Ralph W. Thompson
 Mr. and Mrs. Horace W. Uffelman
 Mr. James D. Van Dyke

**denotes donors who are deceased*

SUSTAINING DONORS

THE FRIENDS CIRCLE (CONT.)

Mrs. M. Lorraine Vandrew
 Ms. Anne L. VanEenwyk
 Mrs. Anna Vitale
 Mr. and Mrs. Owen V. Walsh
 Mr. and Mrs. David R. Walter
 Mr. Edward Wardak
 Ms. Melanie Waters
 Mr. Robert S. Watson
 Mr. Daniel Way
 Mr. C. Robert Weaver
 Mr. and Mrs. Harold F. Weaver
 Mr. George R. Weber
 Mrs. Kathryn M. Weidner
 Mr. and Mrs. William R. Weller
 Mr. and Mrs. Steven J. Wennberg
 Mrs. Phyllis C. Wertime
 Mr. William J. * and Mrs. Cynthia A. Werzyn
 Mr. and Mrs. Clifford A. White
 Mrs. Lois M. White
 Mrs. Phyllis A. White
 Mrs. Candice A. Whitsel
 Mrs. Melissa K. Williams
 Mr. Timothy Wilson
 Mrs. Stacey L. Wilttrout
 Mr. and Mrs. Robert L. Windemuth
 Mr. and Mrs. Brian E. WineMiller
 Mrs. Jane H. Wingerd
 Mrs. Helen S. Wingert
 Ms. Jennie L. Winkle
 Jaime Winner
 Mrs. Kristy J. Witt
 Mr. and Mrs. Paul J. Woerner
 Mr. Thomas W. Wohkittel
 Ms. Coni L. Wolf

Mr. Willard Wolf
 Mr. and Mrs. Donald Wolfe
 Mr. Dennis E. Wolfgang
 Ms. Ruth A. Woodside
 Mr. and Mrs. Ronald R. Yeager Sr.
 Mr. and Mrs. Robert Yealey
 The Rev. Dr. and Mrs. Daniel M. Yeiser
 Ms. Vickie W. York

Businesses

Ace Distributing
 Albright Crumbacker Moul & Itell, LLC
 Alston & Bird LLP
 Ameriprise Financial
 Ava Care Inc.
 Borough of Bonneauville
 C. E. Williams Sons Inc.
 CBM Systems, Inc.
 Chambers' Apothecary
 Choice Family Pharmacy, Inc.
 Colony Papers, Inc.
 Dahbura Family Limited Partnership
 DonationXchange
 eciGroup
 Erickson Financial
 Fayetteville Antique Mall
 FHTC, Inc.
 The Financial Advisory Group
 Fischer Logistics, LLC
 Forrester Lincoln, Inc.
 Fulton Bank, Drivers Division
 George Vujovich, Attorney at Law
 Gettysburg College
 Good Time Ice
 IBM
 Ilgenfritz Financial Group, Inc.

Inservco Insurance Services, Inc.
 J.M. Boswell's Handmade Pipes
 JMT Inc
 Johnnie's Restaurant & Hotel Service, Inc.
 L.M. Gordon, Inc
 Letterkenny Industrial Development Authority
 Lininger-Fries Funeral Home Inc.
 LSC Design Inc.
 Ludwig's Jewelers
 McKonly & Asbury LLP
 Minnich's Pharmacy Inc.
 Oshkosh Corporation
 Park Avenue Pharmacy, Inc.
 Partnership of Packer, Oesterling & Smith, Inc.
 Pennsylvania Department of
 Human Services
 The Philadelphia School
 R. L. Livingston Excavation and Paving, Inc.
 RE/MAX Realty Agency Inc.
 Rebuilders Unlimited, Inc.
 REH Holdings, Inc.
 Rooster Creative Inc.
 Royer's Flowers & Gifts
 SAPA
 Spirit Services, Inc.
 Sterling Association Group, LLC
 SunnyHill Properties Real Estate
 Superior Plus Construction Products Corp.
 Tauck
 Tee Time Golf Pass Inc.
 Travel Time Travel Agency Inc., York
 Tri-Mountain Ventures, LLC
 Utz Quality Foods Inc.
 Waynesboro Construction Co., Inc.
 Waynesboro Day Care Center
 Weikert's Livestock, Inc.

William Penn Parking
 York College of Pennsylvania
 Your Cause, LLC Trustee for Chevron
 Matching Employee Funds
 Zero Ice Corp.

**denotes donors who are deceased*



Churches

Blue Rock United Brethren Church,
Waynesboro

Chestnut Grove Lutheran Church,
York Springs

Christ Episcopal Church, Reading

Christ Lutheran Church, Dallastown

Evangelical Lutheran Church, Greencastle

Grace (Roundtown) Evangelical Lutheran
Church, York

Grace Lutheran Church, Red Lion

Greencastle Foursquare Church, Greencastle

Immanuel Bible Church, Three Springs

Jerusalem Lutheran Congregation of
Western Salisbury, Allentown

Lower Bermudian Lutheran Church,
East Berlin

Mount Zion Lutheran Church, Nuremberg

Mt. Carmel Lutheran Church, Hanover

Mt. Joy Lutheran Church, Gettysburg

Salem Lutheran Church, Dover

Scotland United Methodist Church,
Shippensburg

St. James Lutheran Church, Phillipsburg, NJ

St. John Lutheran Church, New Freedom

St. John's Lutheran Church (Hampton),
New Oxford

St. Michael Lutheran Church, Rossville

St. Paul (Dubs) Lutheran Church, Hanover

St. Paul Lutheran Church, Hanover

St. Paul Lutheran Church, Spring Grove

Tree of Life Lutheran Church, Harrisburg

Trinity Lutheran Church, Arendtsville

Trinity Lutheran Church, Greencastle

Trinity Lutheran Church, Wrightsville

Valley View Community Church, Oaks

Zion Lutheran Church, Glen Rock

Zion Reformed United Church of Christ,
Chambersburg

Foundations

Fidelity Charitable Gift Fund — Richard L.
and Ruth Jean Unger Foundation

The GE Foundation

Organizations

Adult Community Theater Society

American Legion Auxiliary 46

American Legion Post 202

The Calumet Club

Caring Network of Eagle Rock

Chambersburg Area Federal Campaign

Combined Federal Campaign Eastern
Pennsylvania and So Jersey

Downtown Chambersburg, Inc.

The Home Association of McSherrystown

King Street United Brethren Church —
Buds of Promise, Chambersburg

The Mechanicsburg Club

Order of the Eastern Star Chapter 392

Sandra Yealey's Head Lines

SpiriTrust Lutheran, The Village at Sprenkle
Drive Independent Living Association

St. Matthew Lutheran Church's Social
Ministry Committee

Truist Connect

United Way of Central Maryland

United Way of Greater Milwaukee

United Way of Greater Philadelphia
and Southern New Jersey

United Way of Southeastern Pennsylvania

United Way of Wyoming Valley



Residents of SpiriTrust Lutheran®,
The Village at Sprenkle Drive, enjoying
a game of croquet.

SUSTAINING DONORS

THE LOYALTY CIRCLE

Recognizes individuals who have made financial contributions to SpiriTrust Lutheran® for ten or more consecutive years.

25+ Years

Mr. and Mrs. Charles C. Boll
Mrs. Mary L. Chalfant-Basehore
Miss Lenore E. Cronlund
Mrs. L. Lucille Demyanovich
Mrs. Norma Schroll Diehl
Mr. and Mrs. Ralph E. Doner
Mr. and Mrs. James D. Flinchbaugh
Mr. Everett E. Frey
Mr. and Mrs. Roy E. Grove
Mrs. Beatrice B. Harness
Mr. J. Larry Hawk
Dr. Sherman Hendrix and
The Rev. Carol S. Hendrix
Mr. and Mrs. W. Austin Kenly
Mr. and Mrs. Ronald H. Kerr
Mrs. R. Lynne Kiick
Mr. Leroy E. Krebs
Mr. Jack E. Landis
Mr. and Mrs. John A. Leeti
Mr. and Mrs. George C. Mitch
Mr. and Mrs. Wayne B. Mummert
Mr. and Mrs. Bradley B. Nickey
Mr. and Mrs. Allen L. Otey
The Rev. Dr. Arthur L. Ruths
Mr. and Mrs. W. Rodger Sands
Dr. and Mrs. W. Raymond Siegart
The Rev. Herbert C. Spomer
Ms. Jane R. Stabley

Mrs. Carolyn A. Stiles
Mr. and Mrs. Paul E. Weddle

20–24 Years

Mr. and Mrs. David L. Boyer
The Rev. Dr. John M.* and
Mrs. Elizabeth S. Brndjar
John and Lynne Crist
Mrs. Janet S. Culbertson
Mr. Richard G. Draude
Mr. and Mrs. Thomas A. Garver
Mrs. Lois J. Gonder

Mr. and Mrs. Harold W. Raubenstine
The Rev. and Mrs. Richard D. Reichard
Mr. and Mrs. Robert L. Ritz
Robert and Patricia Rundle
The Rev. and Mrs. William C. Snyder
The Revs. Eric B. and Joanne P. Stenman
Mrs. Dorothy R. Stump
Mr. and Mrs. Ralph W. Thompson
Mr. and Mrs. Steven J. Wennberg
Mrs. Phyllis C. Wertime
Mr. and Mrs. Clifford A. White

Mrs. Donna L. Hocker
Mr. and Mrs. Herman K. Hopple
Mr. and Mrs. John S. Howard
Mr. and Mrs. William H. Kauffman Jr.
Mrs. Mary S. Kessler
Mrs. Deborah Kronsteiner
The Rev. and Mrs. Elwood H. Leister
The Rev. Canon David W. Lovelace
Miss Joanne V. Martin
Mrs. Anna Mary E. Nace
Mr. and Mrs. Jerry R. Neth

“SpiriTrust Lutheran is aligned with my personal core values. I believe in their mission and the compassionate care they provide to all people, regardless of their means. When I donate, I know my money is being spent wisely and going toward quality programs and services.”

~LIZ DELLINGER

Mr. and Mrs. John F. Houck
Mr. and Mrs. John E. Jochem
Mrs. Kathy F. Johnson
Mrs. Elizabeth A. Keller
Ms. Janette L. Kessel
Ms. Donna W. Kilgore
Mrs. Norma J. Kumerow
Mrs. Barbara K. Lawver
Mr. and Mrs. Charles E. Miller
Mr. Wayne W. Miller
Mr. and Mrs. Terry A. Monn

15–19 Years

Mr. and Mrs. John E. Biava
Dr. and Mrs. Francis R. Cannon
Ms. Danna L. Drescher
Mr. and Mrs. John J. Dropp
Mrs. Mary Ann Ernst
Mr. John Fairchild and Dr. Lauraine Hawkins
Rosanna M. Felix
Mrs. Sandra L. Harlow
Mr. and Mrs. Charles J. Herber
Ms. Diantha L. Hetrick

Dr. and Mrs. W. Jay Nicholson
Mr. and Mrs. Phillip P. Null
Mr. and Mrs. Joseph P. O'Connell
Mr. and Mrs. Eugene D. Pottorff
Mr. and Mrs. John M. Rinehart
Terry and Jeffery Shade
Mr. and Mrs. Elvin Richard Shives
Mrs. Lois E. Smith
Mr. and Mrs. James D. Sneddon
Mr. B. Robert Snyder
Mr. and Mrs. William L. Speer

*denotes donors who are deceased

Michael and Ellen Stoner
 Mr. and Mrs. Marno A. Tavarez
 Mr. and Mrs. Robert G. Teeter
 Mr. and Mrs. Paul W. Thomas
 Mr. and Mrs. John M. Ulrich Jr.
 Joe and Susan Wagman
 Mrs. Phyllis A. White
 Mr. and Mrs. Charles A. Willhide
 Mr. and Mrs. Timothy E. Wood
 Kim and Luther Zarfoss

10–14 Years

Mr. and Mrs. George E. Bennett
 Mrs. Marie Bernlohr
 Mr. and Mrs. Thomas E. Bollander
 Mr. Robert A. Bowen
 The Rev. and Mrs. Michael R. Brendle
 Henry and Edna Christ
 Mr. and Mrs. Edward F. Clancy
 Mr. G. Ronald Couchman
 Ms. Elizabeth J. Dellinger
 Mrs. Shirley K. Demboski
 Ms. Julianne S. Devaney
 Mr. and Mrs. Robert J. Ehlenbeck
 Mr. and Mrs. George W. Fishel Jr.
 Mr. and Mrs. Randal C. Freeman
 Mr. Todd G. Fry
 Mr. and Mrs. Frederick J. Gerardine Jr.
 Mr. Jeffrey L. Griffin
 Mrs. Angela D. Hagarman
 Ms. Julia S. Harvey
 Mr. and Mrs. Gregory F. Heinbaugh
 Mr. and Mrs. Carroll E. Henderson
 Mrs. Katherine E. Hershey and
 Mr. Timothy J. Hershey

Ms. Marcia G. Hoffman
 Mr. and Mrs. Michael E. Howe
 Mr. and Mrs. Roy A. Keefer
 Mr. and Mrs. Karl K. Kindel
 Ms. Diane J. Klucher
 Mr. and Mrs. John P. Knobloch
 Ms. Barbara J. Kunkel
 Mrs. Georgina Lambourne
 Ms. Ruth Ann Leshner
 Mrs. Esther G. Little
 Mr. Karl J. and Margaret J.* Mattson
 Mrs. Esther S. McBride
 Eugene L. and Patricia A. McKay
 Mr. and Mrs. Christian E. Meyers

Dr. Edmund M.* and Dr. Esther J. Miller
 Larry and Beverly Miller
 Ms. Sherri L. Miller
 Mr. and Mrs. W. Jack Miller
 Mrs. Sue E. Nace
 Mrs. Rebecca S. Nelson
 Mr. and Mrs. Thomas C. Norris
 Mr. Armand H. Ream
 Helen L. Renner, Ph.D.
 Mr. and Mrs. Randy L. Rock
 Mrs. Ginnie L. Rudisill
 Mr. and Mrs. Joseph W. Sabold
 Dr. Patricia W. Savage and
 Dr. Roger B. Johnson

Mr. and Mrs. John W. Schilling
 Mr. and Mrs. Walter M. Schneider
 Ms. Debra Sowers
 Mr. John Stenger
 Mr. Kenneth E. Stepler
 Mrs. Gretchen P. Stuempfle
 Mr. and Mrs. Kenneth E. Sweigart
 Jim and Vicki Thompson
 Mr. and Mrs. William J. Von Schlichten
 Mr. and Mrs. Brian K. Wadel
 Mrs. Anna E. Weaver
 Mr. and Mrs. Donald A. Wissner
 Mr. Dennis E. Wolfgang
 Ms. Barbara H. Wright

**denotes donors who are deceased*



Donald and Norma Slaybaugh, residents, and Joyce West, Residential Living Life Enrichment Director of SpiriTrust Lutheran®, The Village at Utz Terrace.

THRIVENT CHOICE

In 2016, these Thrivent Choice participants designated their Thrivent Choice dollars totalling \$14,272 to SpiriTrust Lutheran®.

Mrs. Virginia R. Alexander
Mr. Ernest Amadio
Ms. Robin W. Arnold
Mr. Earl Baer
Ms. Heidi L. Bair
Mr. David Bixler
Mr. Charles C. Boll
Ms. Bonita Bollinger
Mr. David L. Boyer
Mr. Kenneth R. Boyer
Mrs. Jean M. Brake
Mr. John C. Brake
Ms. Gretchen Bronke
Mr. Henry Bronke
Mrs. Janice H. Brothers
Mr. William L. Brothers
Mrs. Grace A. Byrnes
Mrs. Audrey Clancy
Mrs. Elisabeth Coady
Mr. Robert Coady
Mrs. Christianna Coleman
Mr. David L. Cook
Mrs. Shirley S. Cook
Miss Lenore E. Cronlund
Mrs. Violet E. Deamer
Ms. Danna L. Drescher
Mr. James F. Druck
Mrs. Brenda S. Ellis
Mr. Edward L. Ellis
Ms. June Evans



Jack and Jean Nash, residents of SpiriTrust Lutheran®, The Village at Utz Terrace.

Mr. Raymond Fell
Mrs. Joyce Fisher
Mr. Lawrence L. Gamber Jr.
Mr. Richard Gayman
Ms. Lisa Grotheer
Mrs. Carla S. Haller
Mr. Donald P. Haller
Ms. Nancy Harmon
Mr. Roy E. Kendig
Mrs. Kathleen F. Kerr
Mrs. Kathy E. Kroepil
Ms. Wilma Lau

Mrs. Carol Leedy
Mr. Richard D. Leedy
Ms. Betty Martin
Mr. Charles E. Martin
Mrs. Esther S. McBride
Mr. Mark Meyer
Mrs. Marilyn J. Miller
Ms. Bonnie Moore
Mr. John D. Moore
Mrs. Dorothy Nagele
Mr. William Nagele
Mr. Gordon L. Peters

Ms. Janet Pine
Ms. Susan Quimby
Mr. Frederick D. Royer
Mr. George H. Schmidt
Mrs. Helen H. Schmidt
Mrs. Shirley Anne Schmidt
Mr. Arthur Schulz
Mrs. Mary E. Seavers
Mrs. Evelyn Shertzer
Ms. Melissa Shuey
Ms. Jane Shughart
Mr. Louis Spinelli
Mr. Kenneth E. Stepler
Ms. Treva Stiles
Mr. David F. Storley
Mrs. Sharon Strandberg
Mr. Vincent S. Tassia Jr.
Mr. Allan C. Trostle
Mr. Robert Wolff
Mr. Edwin Wolfgang

**denotes donors who are deceased*

MATCHING AND TRIBUTE GIFTS

We are grateful for the donors, companies, and organizations who participated in the matching gifts program as well as those who made tribute gifts in honor or memory of a loved one.

LEADERSHIP

EXECUTIVE STAFF

Robert L. Rundle

President/CEO

Angela L. Dohrman

Senior Vice President and COO

Carol D. Hess

Vice President of Human Resources

The Rev. Glenn D. Miller

Vice President of External Relations

President of Spiritrust Lutheran Foundation

Revena Rossi

CFO and Vice President of
Support Services

Terry Shade

Vice President of
Community Health Services

President of Spiritrust
Lutheran Home Care & Hospice

President of Spiritrust Lutheran LIFE

VOLUNTEER LEADERSHIP

SPIRITRUST LUTHERAN® BOARD OF DIRECTORS

Robert A. Bowen, *Chair*

The Rev. Michael E. Allwein, *Vice Chair*

Mark Evans, *Secretary*

Claire Weaver, *Treasurer*

Michael Boustead

Bishop James Dunlop

Lisa Wagman Glezer

The Rev. Dr. Neal Hively

The Rev. Canon David Lovelace

Penny Myers

Donna Nicholson

Mike Ocker

The Rev. George Schneider

Lise Shehan

The Rev. Dr. Nelson Strobert

Donald Wissner

The Rev. Dr. Daniel Yeiser

SPIRITRUST LUTHERAN® FOUNDATION BOARD OF TRUSTEES

Anthony P. Campisi, *Chair*

Elizabeth Dellinger, *Vice Chair*

Stephanie Kessler, *Secretary*

Robert A. Bowen, *Treasurer*

Joanne Bankos

Michael Boustead

Samuel S. Laucks II

Keith A. Mummert

Maria Royce

Robert L. Rundle*

Richard Smith

Dwight Utz

SPIRITRUST LUTHERAN® HOME CARE & HOSPICE BOARD

Kenneth Ditzler, *Chair*

Walter Wilson, *Vice Chair*

Carolyn Blackshire, *Secretary*

Dave Mummert, *Treasurer*

Maurice Bobst

Willard Daniels, Jr.

Kirk Diehl

David Erickson

Christopher Frye

Kay MacDowell

Mark Pile, *President/CEO Diakon
Lutheran Social Ministries*

Sue Quimby

Robert L. Rundle*

Faye Snyder

Patricia Weller

Karen A. Wire

SPIRITRUST LUTHERAN® LIFE BOARD

The Rev. Bill Niensted, *Chair*

Audrey Clancy, *Secretary*

Demaree Deardorff, *Treasurer*

Jared Childers

Allie Harper

Donna Hocker

Dr. M. Farooq Khokhar

Mike Ocker

Darlene Ramond

Robert L. Rundle*

Alexandra Sipe

Angela Thomas

SPIRITRUST LUTHERAN® CHAMBERSBURG HOUSING, INC. BOARD

The Rev. Dr. Neal Hively, *Chair*

Shirley Leister, *Vice Chair*

Donna Hocker, *Secretary*

The Rev. Richard A. Randall, *Treasurer*

Kathleen F. Kerr

Ronald Madison

Ronald Mowen

Jean Mowen

Penny Myers

Robert L. Rundle*

SPIRITRUST LUTHERAN® SHREWSBURY HOUSING, INC. BOARD

The Rev. Janyce Jorgensen, *Chair*

Linda Roenigk, *Secretary*

Shirley Simpson, *Treasurer*

Barbara Burns

Marie Coyle

Penny Myers

Robert L. Rundle*

Clarence Tauzin

SPIRITRUST LUTHERAN® WEST MANHEIM HOUSING, INC. BOARD

Peggy Martin, *Chair*

Helen Renner, *Secretary*

Steve Miller

Penny Myers

Martin Rock

Robert L. Rundle*

*denotes ex officio member



**Gifts provide compassionate care
and help for the most vulnerable.**

On behalf of those served through the agency,
thank you for your generosity in supporting the
work of SpiriTrust Lutheran®.

 **SpiriTrust Lutheran®**

1050 Pennsylvania Avenue
York, Pennsylvania 17404

717.854.4425 | 888.404.3500

www.SpiriTrustLutheran.org

